

Priamide Models

Stryker A1 conversion set

for Stryker AFV Club 1/35 scale models

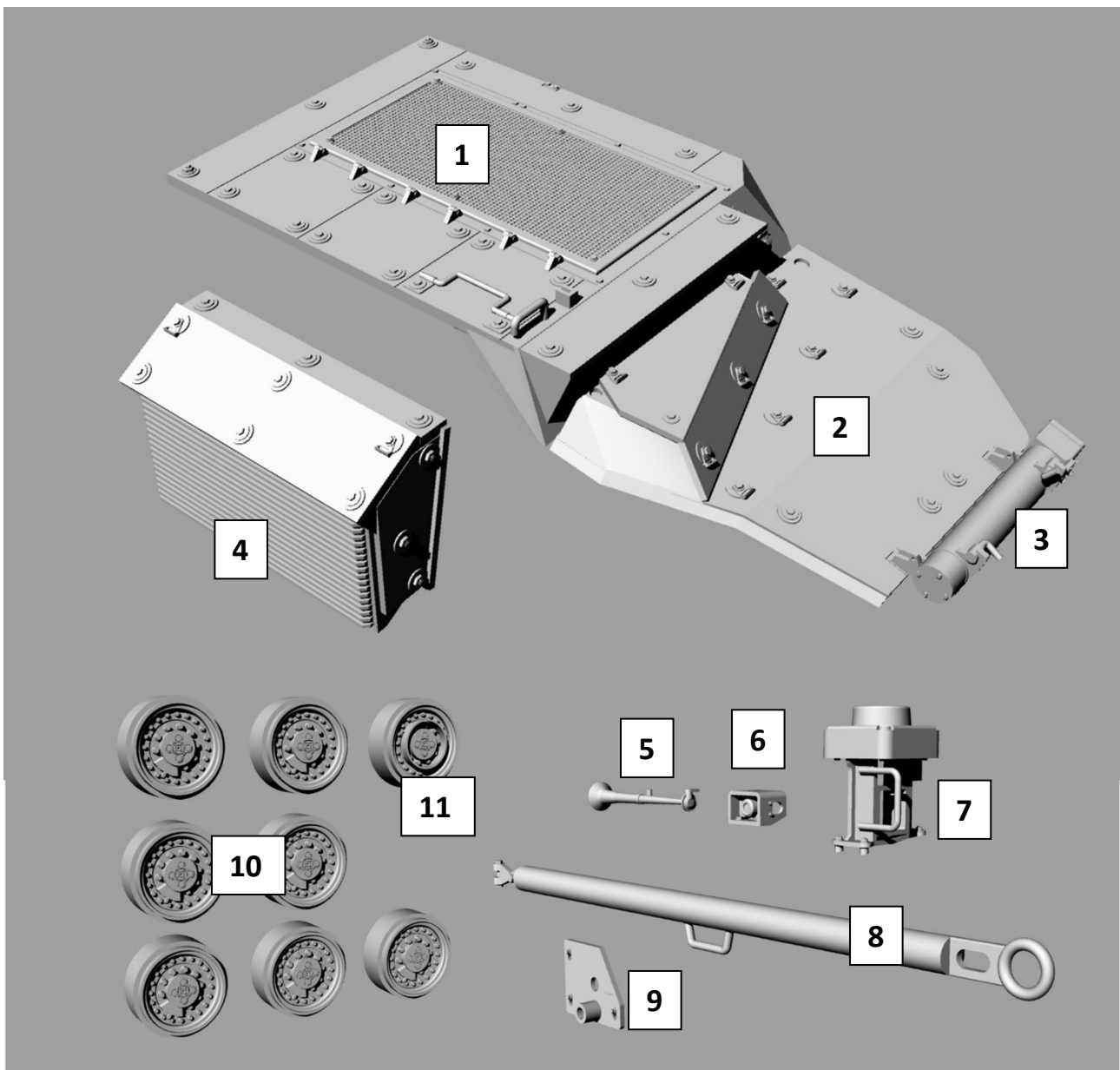
The Stryker A1 version is the latest evolution of the Stryker platform.

It is based on the DVH version with important changes in the engine deck area and the introduction of an external unit on the right side of the vehicle.

Wheel rims have a different design.

To build a Stryker A1 you need to use also my “Stryker DVH conversion set” to upgrade the model to a DVH version and then use this conversion set to upgrade to the A1 version.

Included in this sets are: engine deck, engine hatches, rims, external unit and other parts.



Start modifying the upper hull.

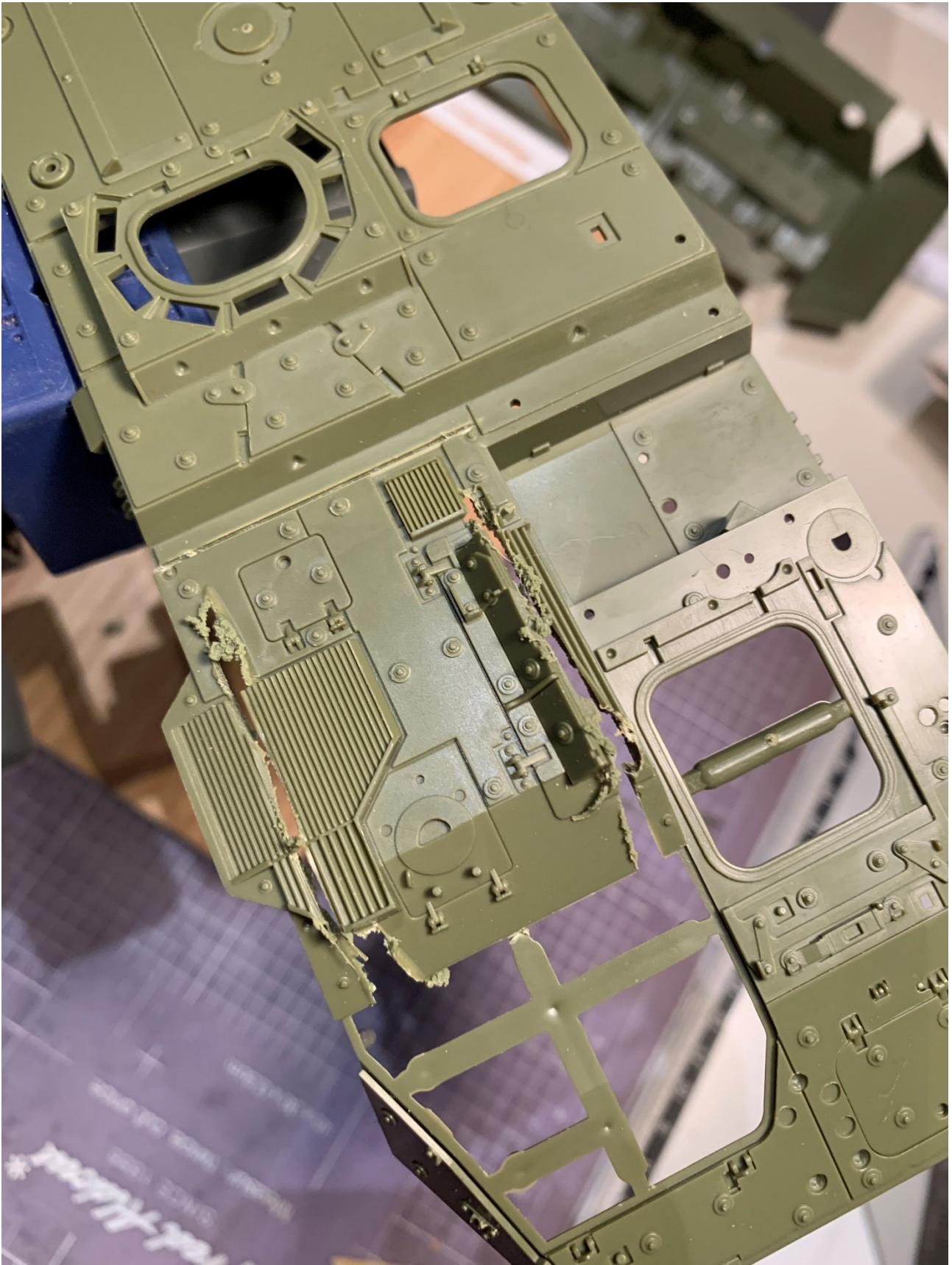
Here “surgery” is needed because the engine deck of the A1 is completely different than the M1126 and M1130.

Here are photos of the original hull and of some intermediate “surgery” steps; last picture is the upper hull ready to receive the new engine deck.

To make this “surgery” I used my Dremel, an X-Acto cutter and sand paper.



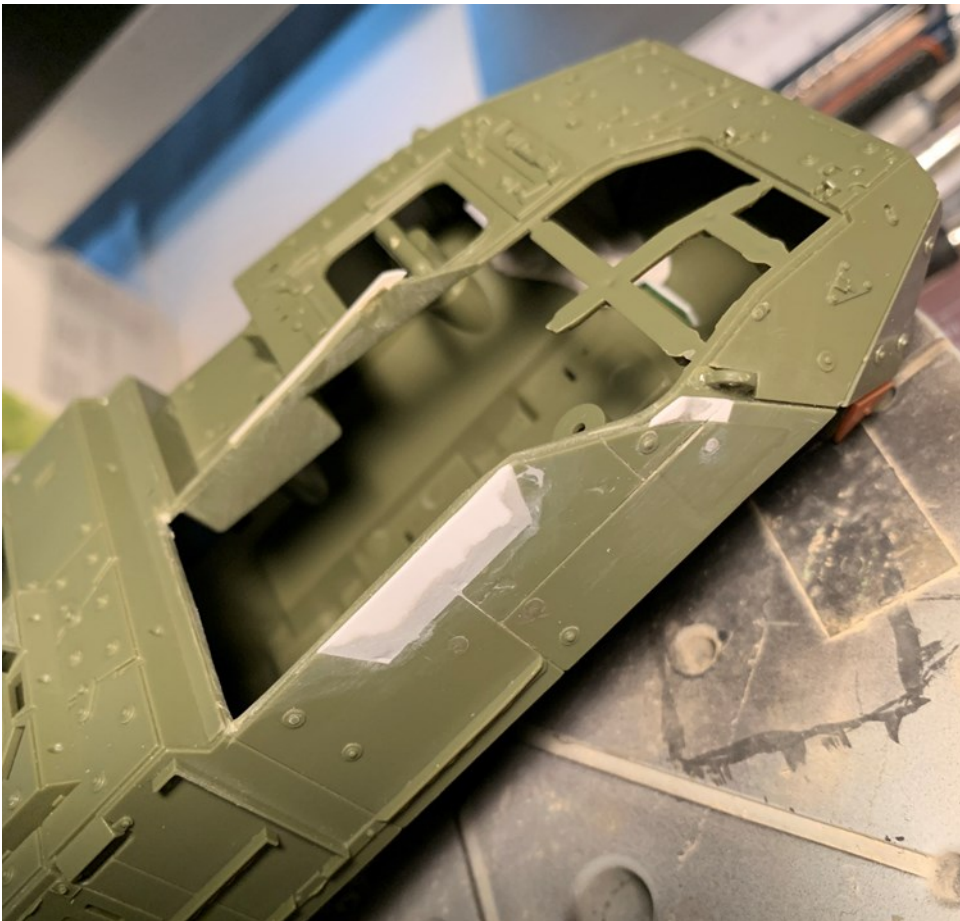
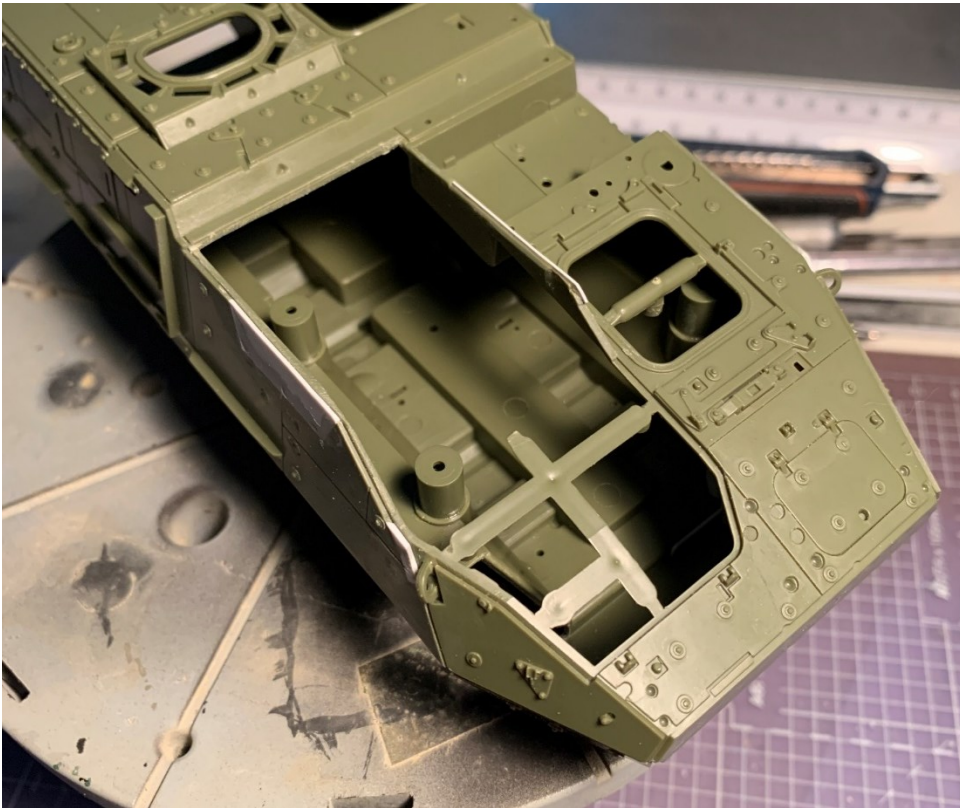
Step 1 using Dremel with a rotary cutting blade.



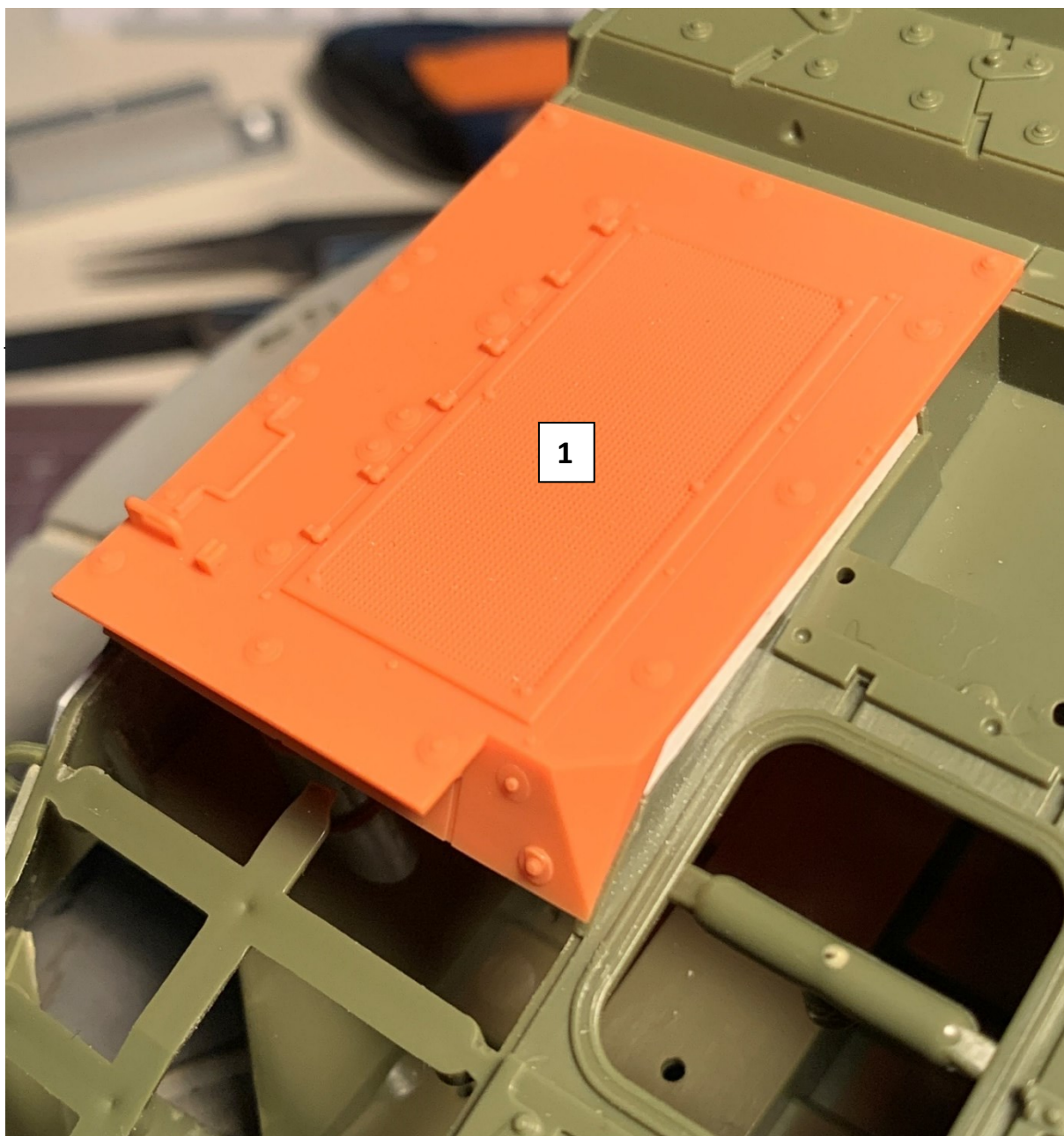
Step 2 engine deck removed using an X-Acto cutter



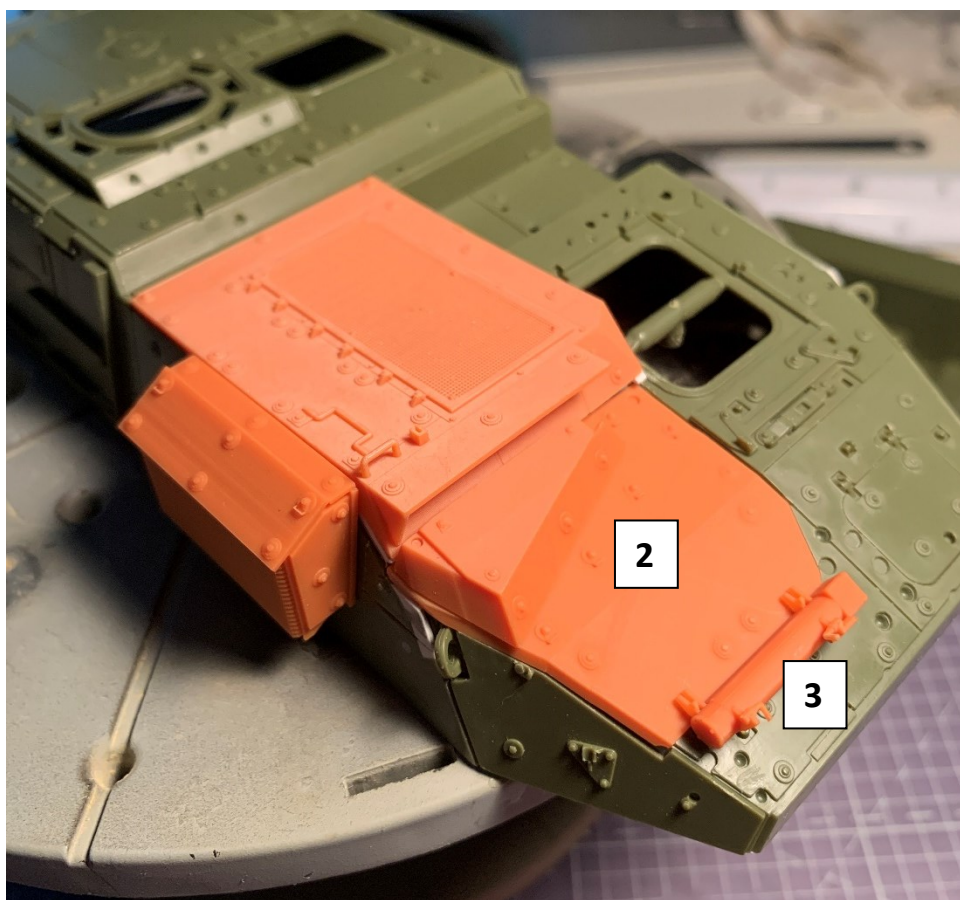
Step3 after more cutting and sanding, the body is ready for adding the new engine deck



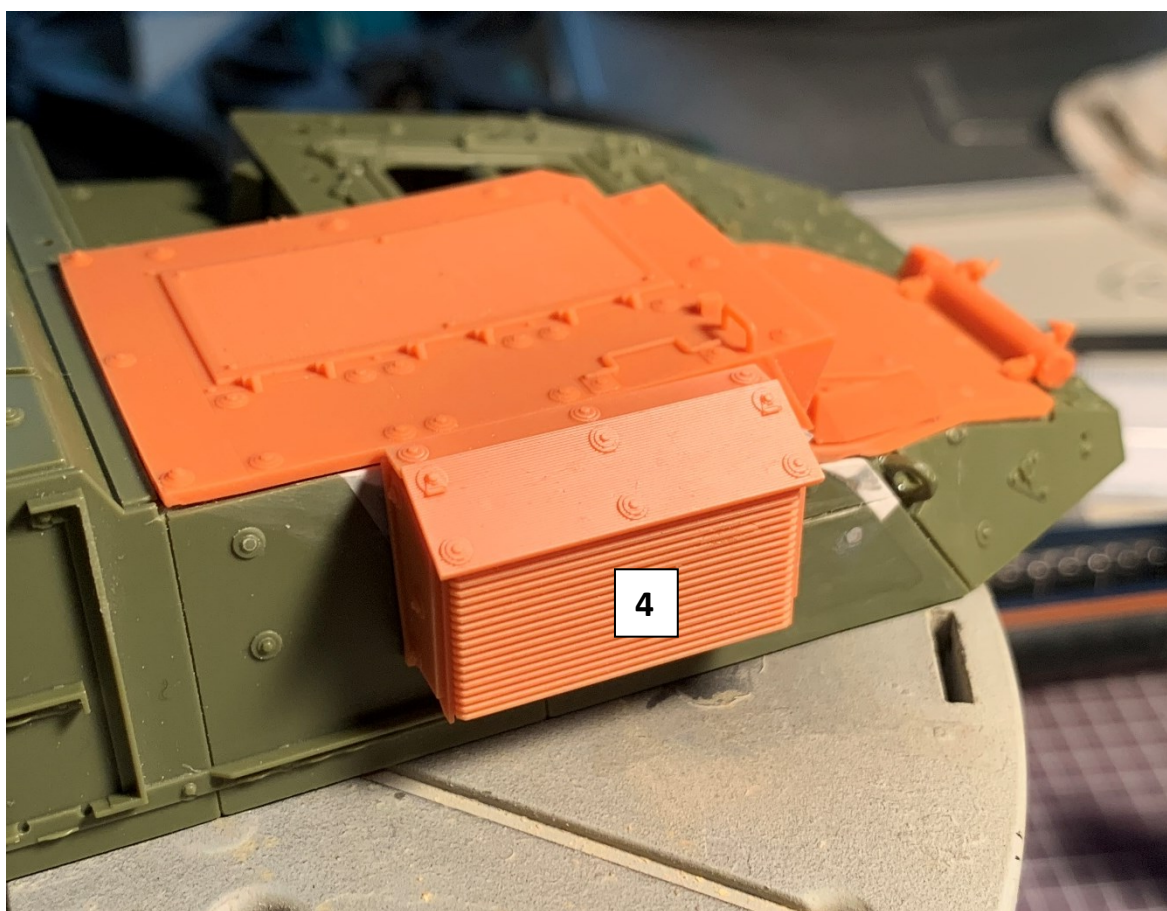
And here is the new engine deck in place [part 1]



Then you can place [part 2] replacing part C9 from the AFV model and add [part 3] at the bottom of the engine hatch.



Then you can position [part 4] on the right side of the vehicle.

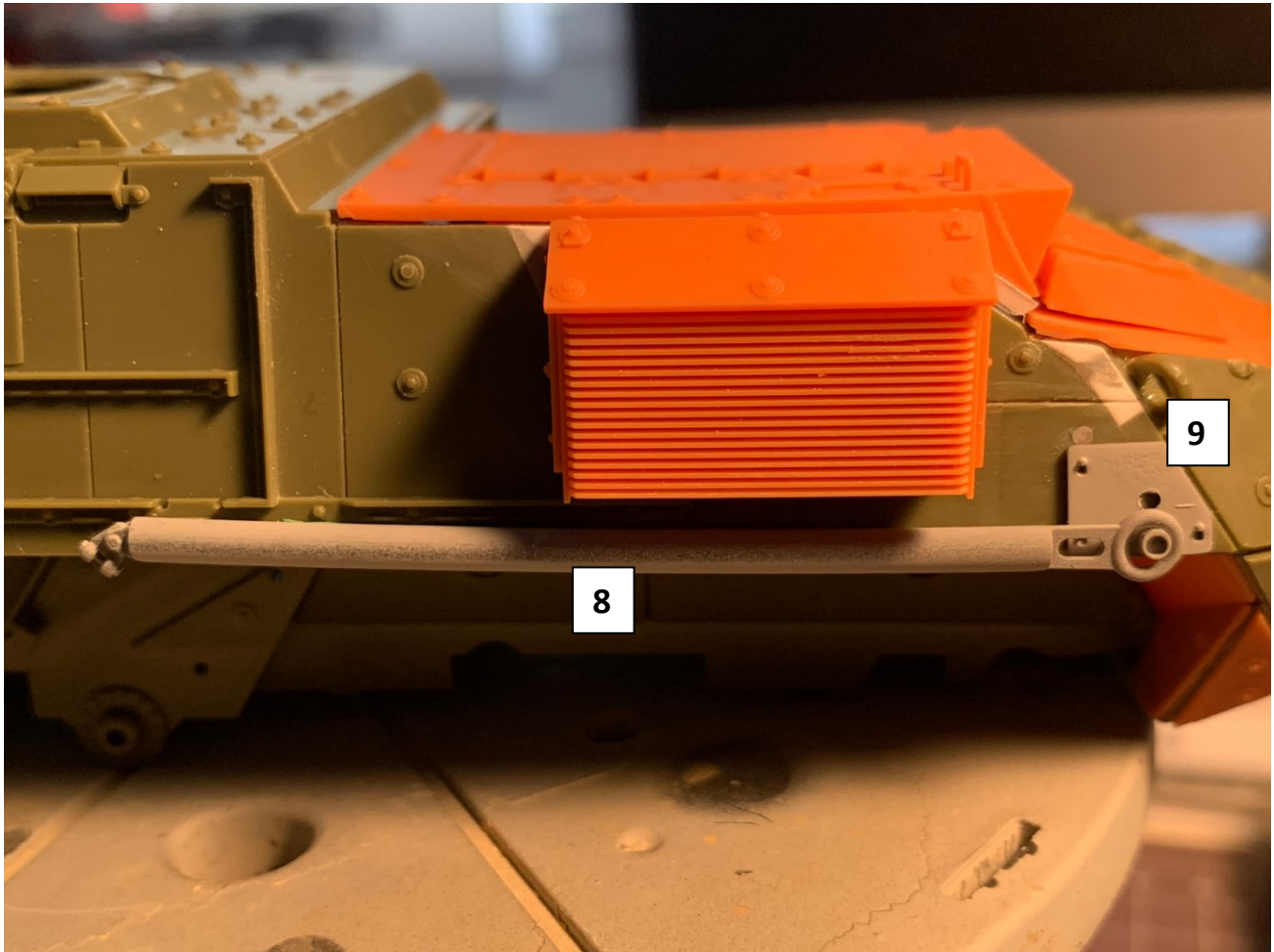


Another visible difference between the A1 version and the original and the DVH one, is the position of the tow bar on the right side of the vehicle.

In the A1, due to the presence of the external unit, the tow bar has been moved downwards (see photos).



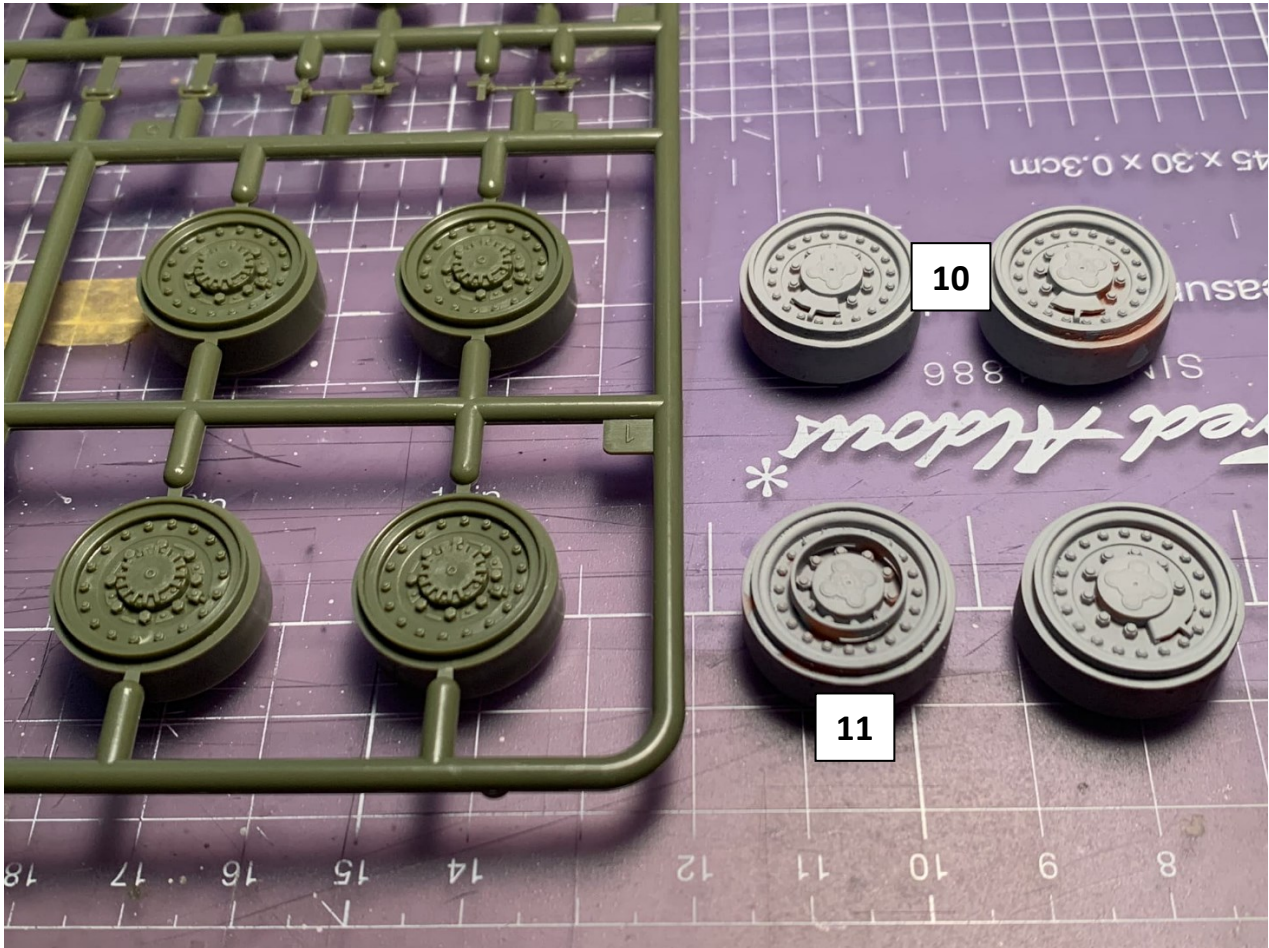
You need to sand away the tow bar attachment plate that is integrated with the body of the vehicle and add [part 9] from my conversion set. In the set you can also find the tow bar [part 8] that is not included in the AFV model.



The Stryker A1 version has different wheel rims than the previous versions.

In the photo, on the left are the rims of the old versions from the AFC Club kit, on the right are the ones included in this conversion set.

Note that the new rim on the bottom left [part 11] is slightly different from the other seven rims [part 10]; this rim has to be placed on the driver's side, in the front position.



Included in this set are also:

- the BFT antenna with its mount [part 7]
- the horn [part 5]
- the Driver Video Enhancer camera [part 6] to be positioned at the front left corner of the engine deck

